

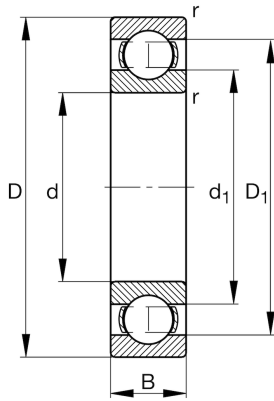
FAG

**16002-A**

Deep groove ball bearing

Schaeffler ID:  
0604501770000Deep groove ball bearing 160..-A, single  
row, steel sheet metal cage

## Technical information

**Dimensions**

$r_{\min}$	0.3 mm	Minimum chamfer dimension
$D_1$	26.8 mm	Shoulder diameter outer ring
$d_1$	20.5 mm	Shoulder diameter inner ring
	0.024 kg	Weight

**Main Dimensions & Performance Data**

$d$	15 mm	Bore diameter
$D$	32 mm	Outside diameter
$B$	8 mm	Width
$C_r$	5,590 N	Basic dynamic load rating, radial
$C_{0r}$	2,840 N	Basic static load rating, radial
$C_{ur}$	191 N	Fatigue load limit, radial
$n_G$	33,500 1/min	Limiting speed
$n_{gr}$	20,000 1/min	Reference speed

**Mounting dimensions**

$d_{a\min}$	17 mm	Minimum diameter shaft shoulder
$D_{a\max}$	30 mm	Maximum diameter of housing shoulder
$r_{a\max}$	0.3 mm	Maximum fillet radius

**Calculation factors**

$f_0$	13.9	Calculation factor
-------	------	--------------------

**Temperature range**

$T_{\min}$	-30 °C	Operating temperature min.
$T_{\max}$	120 °C	Operating temperature max.